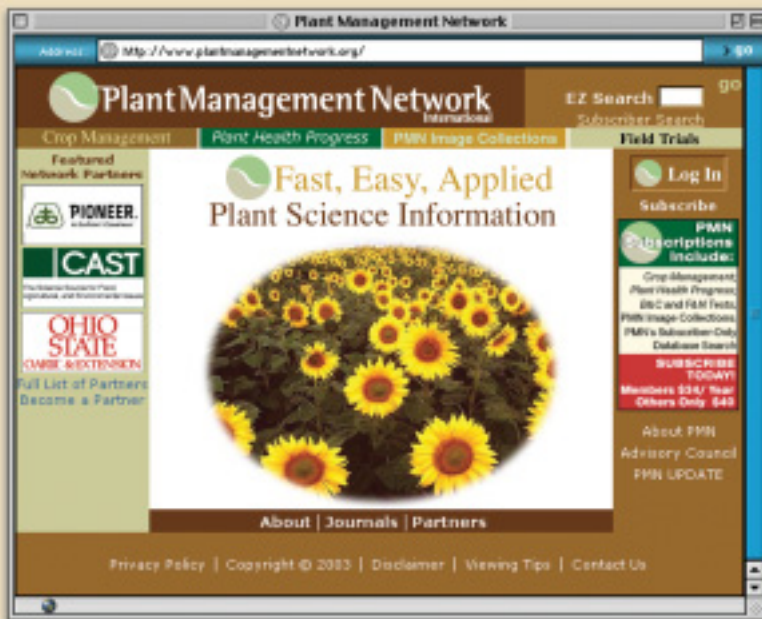




Plant Management Network

International



- Practical Grower Information
- Insect and Disease Recommendations
- Crop Production Management
- Latest Field Trial Data
- Innovative Products and Services

Subscribe by
April 30, 2003
&
SAVE!

www.plantmanagementnetwork.org



plant management network

Created for Practicing Professionals

The PLANT MANAGEMENT NETWORK (PMN) is a not-for-profit resource designed for the plant science and agricultural community. The network distributes information from its many partners in education, extension, industry, non-profit organizations, and government. Network subscribers include growers, crop advisors, extension personnel, agricultural researchers, and agricultural educators.

What You'll Find at the PLANT MANAGEMENT NETWORK

- Two peer-reviewed journals: *Plant Health Progress* and *Crop Management* for current, applied information
- Image collections useful for teaching, training, diagnosing, and presentations
- Field trials including Crop Management Variety Trials, Biological & Cultural Tests for Control of Plant Diseases, and Fungicide & Nematicide Tests
- Plant Science Database, including thousands of resource pages provided by network partners
- Comprehensive search capabilities for fast answers
- Monthly electronic newsletter, PMN Update

Subscribe by
April 30, 2003
& **SAVE!**

www.plantmanagementnetwork.org





management publications



Peer Reviewed Journal of Applied Crop Science



Peer Reviewed Journal of Applied Plant Health

Applied Online Journals

Liberal use of color images and graphics makes articles from the network's two online peer-reviewed journals easy and interesting to read. You'll find applied research, review articles, crop and plant management guides, briefs, products and industry news, opinions, and letters to the editor at *Plant Health Progress* and *Crop Management*.

PMN Update

Subscribers receive the monthly PMN electronic newsletter to alert you to new articles, network features, and hot topics.

NEW Third Journal Coming Soon!
Forage & Grazinglands

pmn image collections



Search the database of 1,400 images and growing!

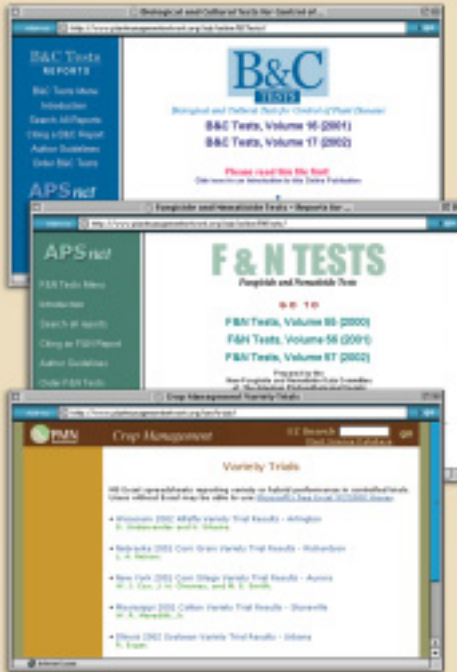
Expand Your Collection of Plant and Crop Images

PMN Image Collections includes more than 1,400 photos, graphics, charts, maps, biological drawings, chemical structures, diagrams, and disease cycles to help you identify problems caused by diseases and other agents; design dynamic study guides, training materials, and presentations; use as diagnostic comparisons to actual plant samples; or educate clients and technical sales staff.

PMN Image Collections consist of images from *Plant Health Progress*, *Crop Management*, and contributions from APS PRESS. PMN subscribers may utilize images as described in the terms of use statement for each image.

Gain Knowledge from Field Trial Reports

With your PMN subscription, you'll find fully searchable field trials, including Biological and Cultural Tests for Control of Plant Diseases, Fungicide and Nematicide Tests, and Variety Trials.



Biological and Cultural Tests for Control of Plant Diseases

B & C Tests contains annual reports based on replicated disease control tests involving nonchemical means. Each volume examines such crops as fruits and nuts, vegetables, corn, sorghum, soybeans, small grains, field crops, turfgrass, ornamentals and trees, citrus, and tropical plants.

Fungicide and Nematicide Tests

F & N Tests contains annual test reports covering pome fruits; stone fruits and nuts; small fruits; vegetables; nematicides (all crops); cereal and forage crops; field crops; seed treatments; turfgrass; ornamentals and trees; citrus, tropical, and miscellaneous crops; materials under trial; chemicals evaluated; manufacturers of chemicals evaluated; list of materials for testing; and conversion factors.

Variety Trials

Variety Trials contains annual reports of variety and hybrid performance in controlled trials. Crops covered include alfalfa, corn grain, corn silage, cotton, grain sorghum, soybeans, and wheat. New tests are added as they are published.



PMN
Subscriptions
starting at
\$34
Annually!

Search Criteria

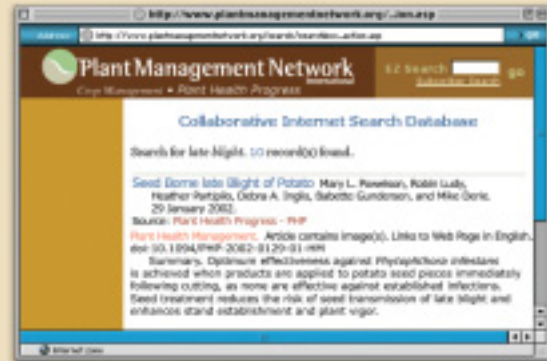


Extensive search capabilities allow you to locate information fast.

Get Information Fast

Comprised of thousands of web-based resource pages, the Plant Science Database provides you quick access to the information you need now. You'll find PMN articles as well as fact sheets, newsletters, product listings, training resources, and related information hosted at PMN's partner university, company, and association websites.

Search Results



Consistent format allows you to quickly scan and select articles of interest.



“*...the questions I get cover the gamut...well worth the money!*”

— Allen James,
Technical Services, Mid Valley Agriculture
Services Inc.

“*PMN’s journals are an excellent way to share applied research and extension perspectives. The PMN site keeps adding features and links...as an extension professional, PMN is becoming more and more useful to me as it grows.*”

— Jim Chatfield,
Ohio State University Extension

The PLANT MANAGEMENT NETWORK is a collaborative endeavor of the plant science community and is made possible by the following network partners:

- The American Phytopathological Society (APS)
- American Society of Agronomy (ASA)
- University of Arkansas
- University of California at Davis
- Campbell Scientific, Inc.
- Cornell University
- Council for Agricultural Science and Technology (CAST)
- Crop Science Society of America (CSSA)
- University of Georgia
- Iowa State University
- North Carolina State University
- Ohio State University
- Oklahoma State University
- PBI / Gordon Corporation
- Pioneer Hi-Bred International, Inc.
- NCSRP Plant Health Initiative
- Potash & Phosphate Institute (PPI)
- South Dakota State University
- Syngenta
- Washington State University
- Virginia Cooperative Extension

Inquire about joining the partner program:
partners@plantmanagementnetwork.org



SAVE

when you subscribe by **April 30, 2003!**

Regular Personal Subscriptions

**ONLY \$40 per year when you subscribe by
April 30, 2003**

\$45 beginning May 1, 2003

Member Affiliated Personal Subscriptions

(Members of *APS, ASA, CAST, and CSSA*)

**ONLY \$34 per year when you subscribe by
April 30, 2003**

\$38 beginning May 1, 2003

Plus - Get 1 Month **FREE** When You Order
ONLINE by **April 30, 2003!**

[Subscribe](#)

Get All This in Your PMN Subscription!

- *Plant Health Progress*
- *Crop Management*
- PMN Image Collections
- Biological & Cultural Tests for Control of Plant Diseases
- Fungicide and Nematicide Tests
- Crop Management Variety Trials
- Plant Science Database
- PMN Update

Fax or mail payment to:

PLANT MANAGEMENT NETWORK
3340 Pilot Knob Road
St. Paul, MN 55121-2097 U.S.A.
Fax: +1.651.454.0766

Toll-Free, **1.800.328.7560**, in the U.S.A.
and most of Canada, or +1.651.454.7250
elsewhere.

E-mail:
subscriptions@plantmanagementnetwork.org

www.plantmanagementnetwork.org

